

Reproducibility and figures

<http://github.com/lanHawke/im2sim>

I. Hawke

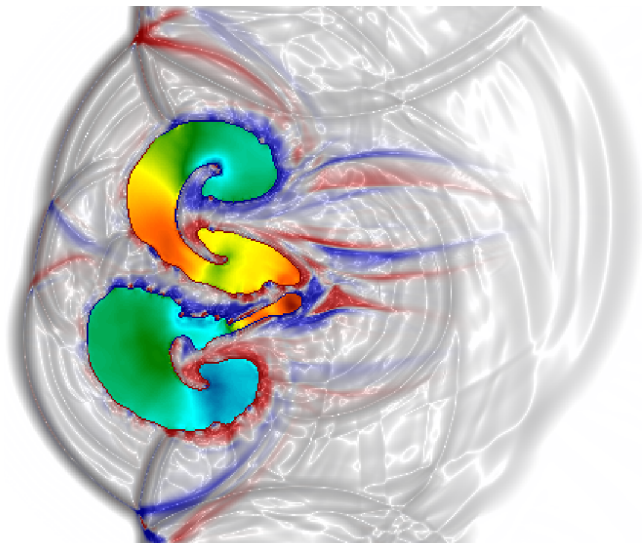
Mathematical Sciences,
University of Southampton, UK

Einstein Toolkit Workshop, Stockholm, August 2015

There's a
"reproducibility
problem in science".

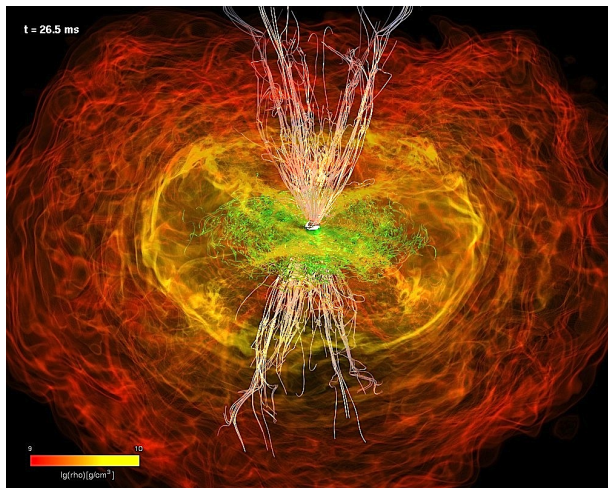
What to reproduce?

*The image is the
simulation.*



Importance of images a big problem: easy to detach from context.

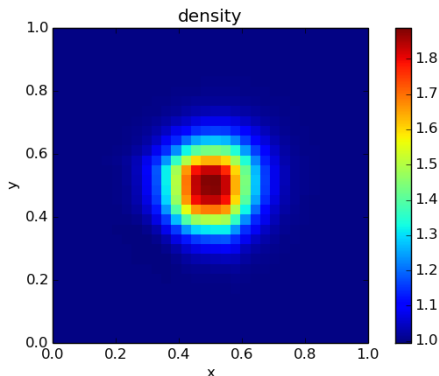
- Posters
- Grants
- Movies
- Webpages
- Google Image
→ talks...



A quick hack: embed metadata in images to allow replication.

Method:

- Put simulation code in docker container
- Given container, script embeds link to `hub.docker` in figure.
- Given figure, script downloads container from `hub.docker`.



Proposal: make this robust for ET.